

H

G

F

E

D

C

B

A

H

G

F

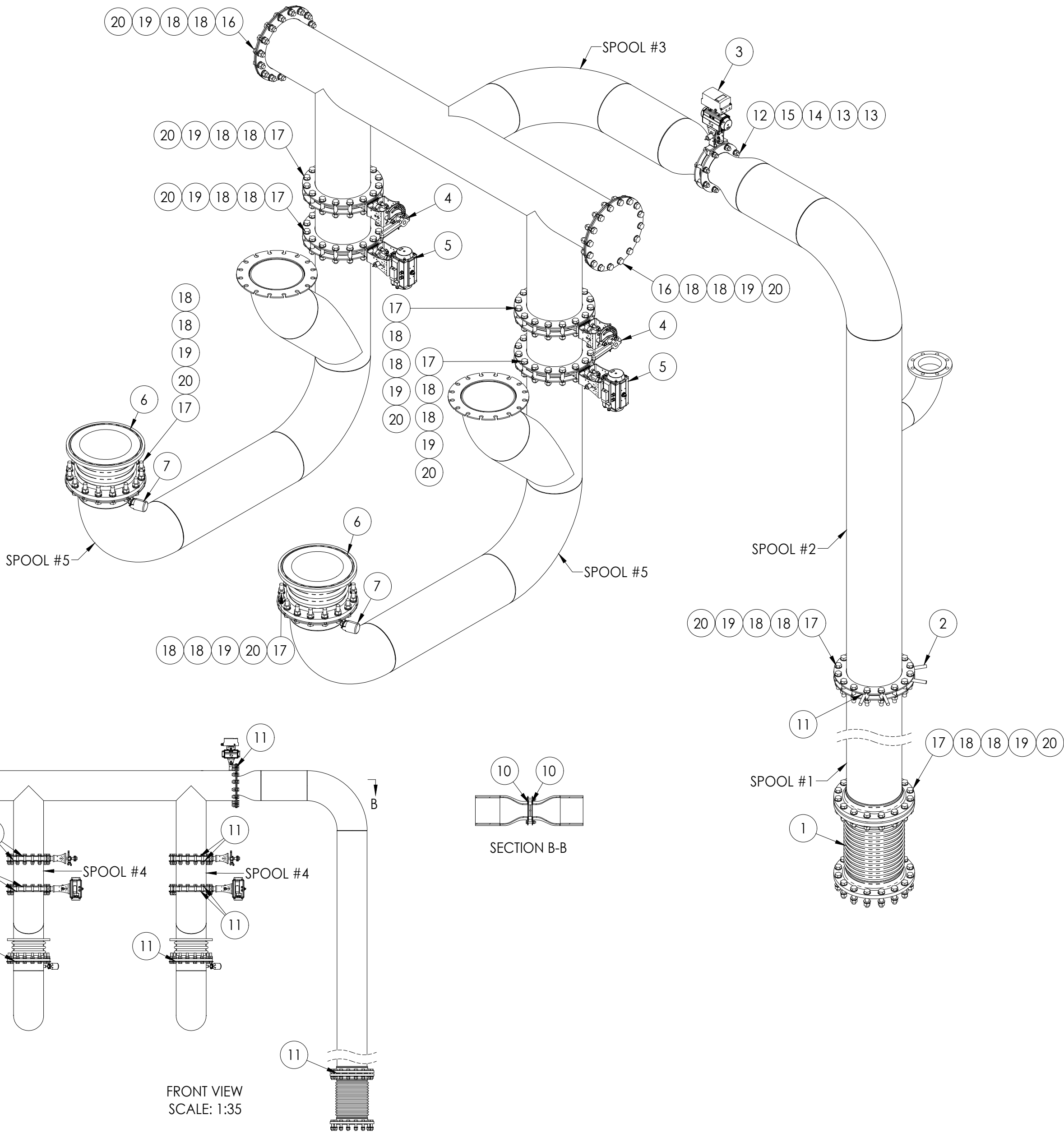
E

D

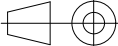
C

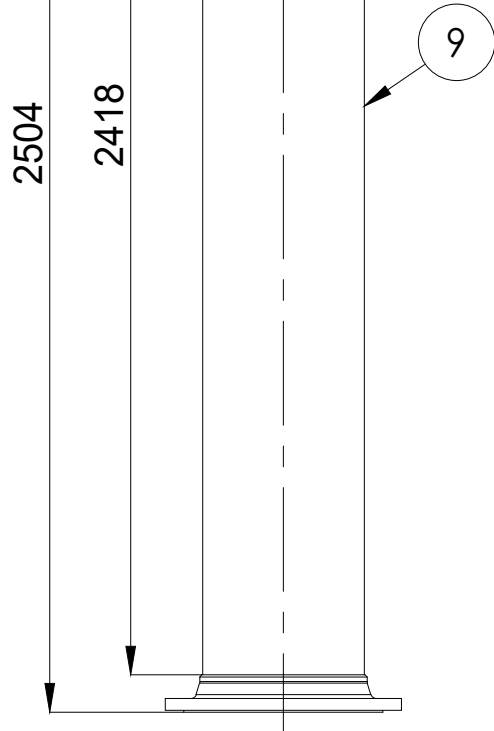
B

A

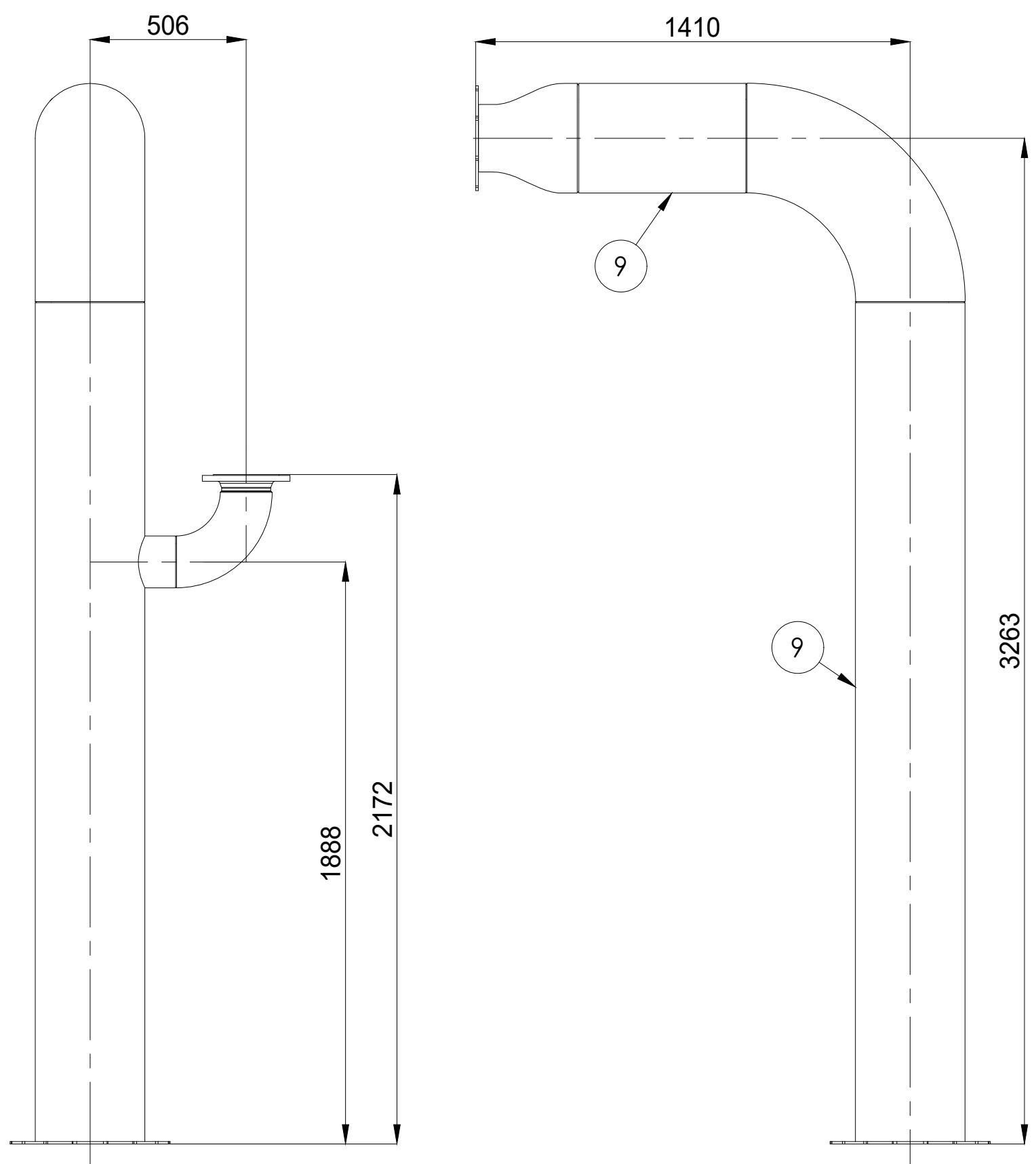


20	NUT DIN 934 M24-A4-80	A	NUT M24	A4		0.10	176	17.6	
19	DIN127-M24-A4	A	WASHER M24	A4		0.03	176	5.28	
18	DIN125-M24-A4	A	WASHER M24	A4		0.03	352	10.56	
17	DIN933-M24X110-A4-80	A	BOLT M24X110	A4		0.53	144	76.32	
16	DIN933-M24X65-A4-80	A	BOLT M24X65	A4		0.37	32	11.84	
15	NUT DIN 934 M20-A4-80	A	NUT M20	A4		0.06	8	0.48	
14	DIN127-M20-A4	A	WASHER M20	A4		0.02	8	0.16	
13	DIN125-M20-A4	A	WASHER M20	A4		0.02	16	0.32	
12	DIN933-M20x100-A4-80	A	BOLT M20X100	A4		0.33	8	2.64	
11	DIN 2690		GASKET - KLINGERSIL C-4430 - 3 THK. - DN350	FIBERGLASS WINBR		0.14	16	2.24	
10	DIN 2690		GASKET - KLINGERSIL C-440 - 3 THK. - DN200	FIBERGLASS WINBR		0.04	2	0.08	
9	EN 10217-7 - SS316L		TUBE 14" - 5 THK - WELDED PIPE	AISI 316L		0	17454mm	0	
8	EN 10217-7 - SS316L		TUBE 6" - 4.5 THK - WELDED PIPE	AISI 316L		0	278mm	0	
7	PID 560	-	THERMOCOUPLE TYPE K, 1 X NICKRNI, NOMINAL LENGTH = 250 MM, EXECUTION WITH REPLACEABLE GAUGE SLIDE, PROTECTION TUBE Ø 10 X 1 MAT. 1.4541, CONNECTION HEAD FORM B, WITH CABLE CONNECTION M 20 X 1.5	COMMERCIAL		3.42	2	6.84	
6	PID 410	-	SPECIAL EXECUTION: MAX. OPERATING TEMP.: UP TO 350°C TOTAL LENGTH: 265 MM, EXTENSIBILITY: AX. 23 MM / LAT. 9 MM; PN10.	COMMERCIAL		80.66	2	161.32	
5	PID 380&650	-	BUTTERFLY VALVE FOR INSTALLATION BETWEEN 2 FLANGES DN350, INCL. STEP SEAT SEALING, FOR AIR / WASTE GAS 480°C WITH PNEUMATIC ACTUATOR, SINGLE-ACTING, OPEN/CLOSE IN 1 SECOND	COMMERCIAL		38.18	2	76.36	
4	PID 350&635	-	5 BAR COMPRESSED AIR WITH 3/2-WAY SOLENOID VALVE 24VDC LEAKAGE APPROX. 0.02% OF KV 90°, PN 10, INCL. POSITION SWITCH 24VDC, OPEN/CLOSE, 2-WIRE	COMMERCIAL		25.71	2	51.42	
3	PID 340	-	BUTTERFLY VALVE FOR INSTALLATION BETWEEN 2 FLANGES DN 350 PN 10 FOR AIR, WITH HANDLE CONTROL BUTTERFLY VALVE FOR INSTALLATION BETWEEN 2 FLANGES DN 200 PN 10 FOR AIR AND NATURAL GAS JASTA GD6, DWIGS CERT. COMPLETE ASSEMBLED WITH PNEUMATIC ACTUATOR, OPEN/CLOSE IN 3 - 5 SECONDS MAX. AND SIEMENS SIPART PS 2, TYPE: 6DS010-0NG01-0AA0-Z C20, 4-20 MA IN- AND OUTPUT, 24VDC	COMMERCIAL		28.80	1	28.8	
2	PID 310	-	MEASURING ORIFICE FOR AIR, INSTALLATION BETWEEN FLANGES DN350, V= 5200 NM3/H, PE= 90 MBAR, DIFFERENTIAL PRESSURE : 15 MBAR	COMMERCIAL		9.31	1	9.31	
1	PID 1100&1101	-	COMPENSATOR 14" - DN350 - A121 - 600 LENGTH	COMMERCIAL		70.41	1	70.41	
Nº	PART NUMBER / ARTICLE CODE	REV.	DESCRIPTION	MATERIAL	MANUFACTURER	TAG	WEIGHT (KG)	QTY.	TOTAL WEIGHT (KG)

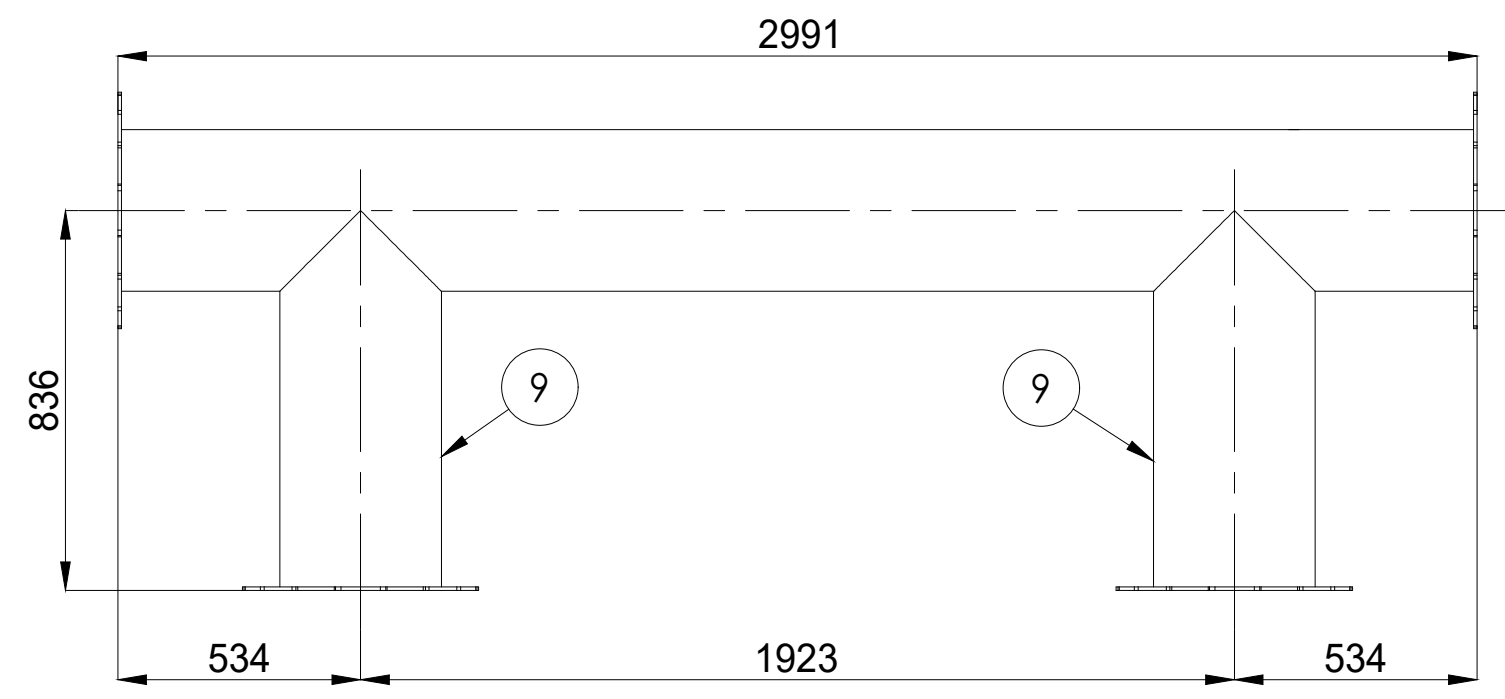
Rev.	Modification								Name	Date			
This drawing is property of INSERTEC. Must not be copier or transferred to third parties in any way without written authorization.													
Tolerance for dimensions without tol. according to ISO 2768-mK													
More than	0.5	3	6	30	120	400	1000	2000	Draw	Name	Date	Material	
Less	3	6	30	120	400	1000	2000	4000			18/09/2025	316L	
Machine Tool	± 0.1	± 0.1	± 0.2	± 0.3	± 0.5	± 0.8	± 1.2	± 2	Checked		18/09/2025	Weight (kg)	
Welded		± 0.5	± 1	± 1.5	± 2	± 3	± 4	± 6	Verified		19/09/2025	2890	
Customer:				Format: A2					Title ALINVEST TMT (FVRB-2,7-25) SECOND STAGE AIR ROUTE				
				Scale: 1:20									
<div>ALINVEST</div>				Project Methode:					Part Number				Revision
									2558-3321-TMT-M-ESR10 -GEN01				B
<div><div>insertec</div><div>Furnaces & Refractories</div></div>									Customer Number				Sheet
									-				1/2



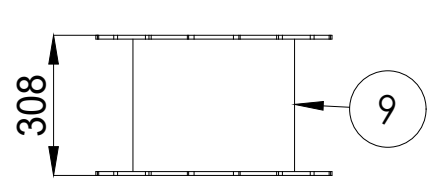
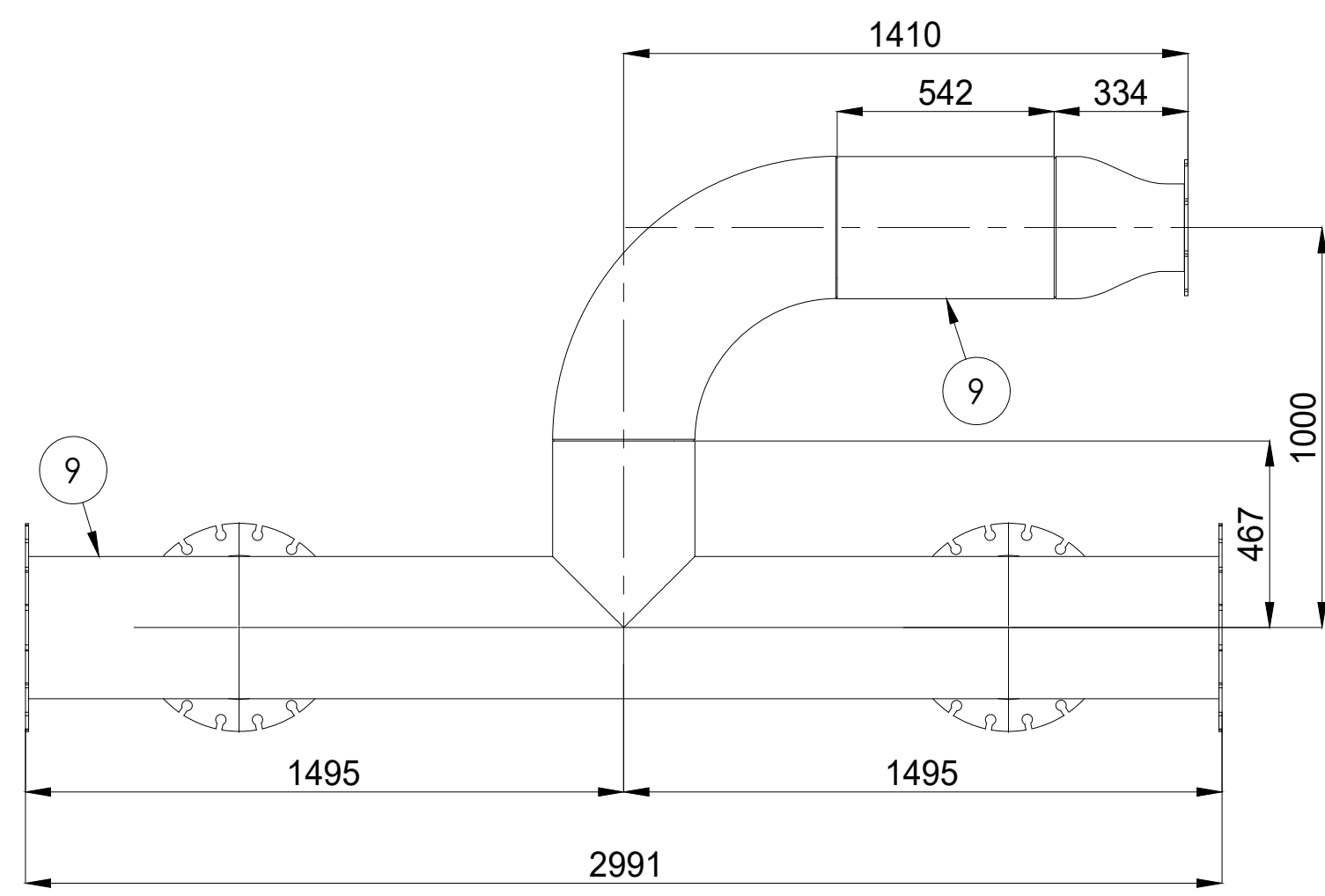
SPOOL #1 - QTY: 1



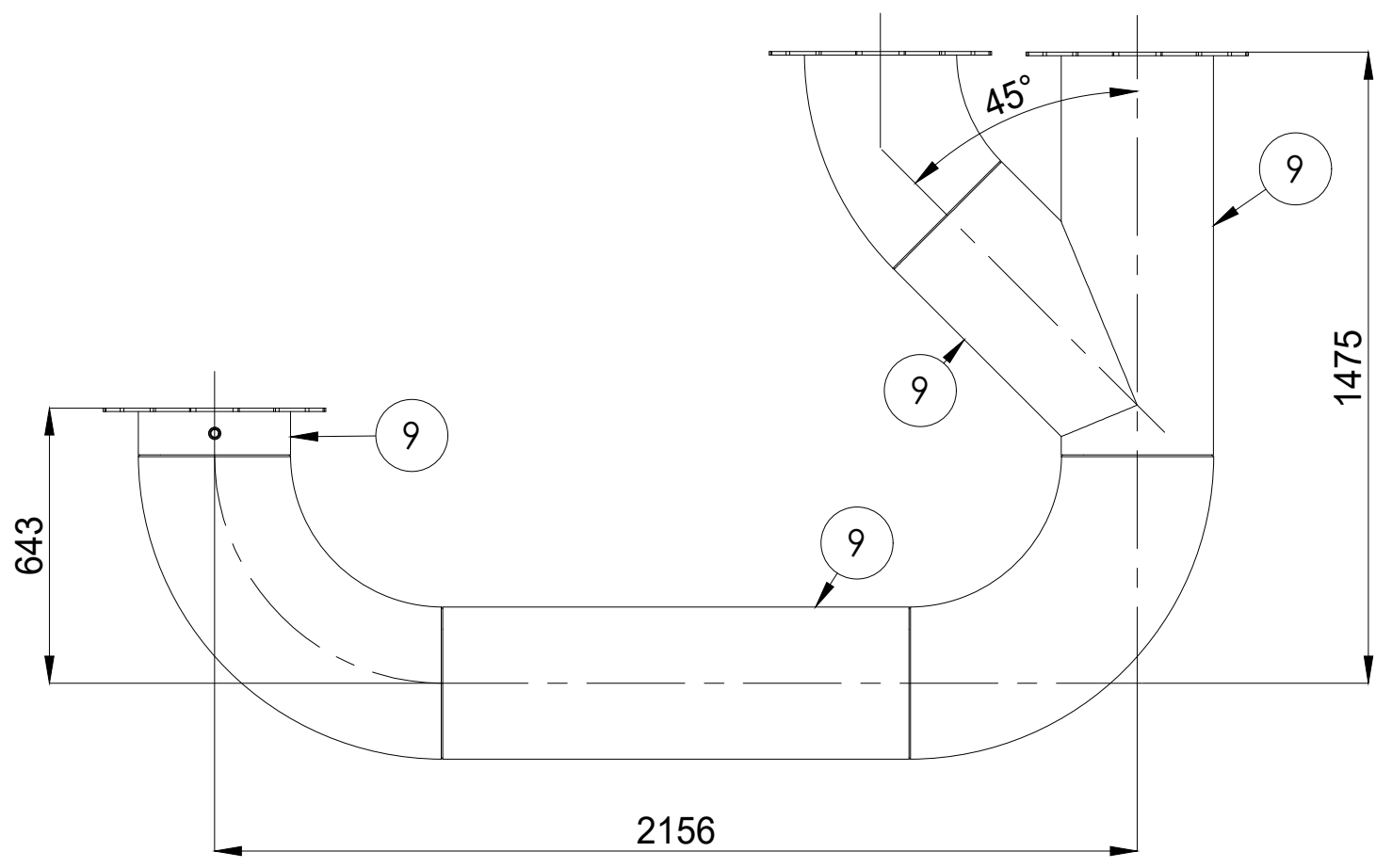
SPOOL #2 - QTY: 1



SPOOL #3 - QTY: 1



SPOOL #4 - QTY: 2



SPOOL #5 - QTY: 2

Rev.

Modification

Name

Date

This drawing is property of INSERTEC. Must not be copier or transferred to third parties in any way without written authorization.

Tolerance for dimensions without tol. according to ISO 2768-mK		Name	Date	Material									
More than	0.5	3	6	30	120	400	1000	2000	Draw		18/09/2025	316L	
Less	3	6	30	120	400	1000	2000	4000	Checked		18/09/2025		Weight (kg)
Machine Tool	± 0.1	± 0.1	± 0.2	± 0.3	± 0.5	± 0.8	± 1.2	± 2	Verified		19/09/2025		
Welded			± 0.5	± 1	± 1.5	± 2	± 3	± 4	± 6	Verified		19/09/2025	2890
Customer:													

Format: A2

Scale: 1:20

Project Methode:

ALINVEST

insertec Furnaces & Refractories

Title

ALINVEST
TMT (FVRB-2,7-25)
SECOND STAGE AIR ROUTE

Part Number

2558-3321-TMT-M-ESR10
-GEN01

Revision

B

Customer Number

-

Sheet

2/2